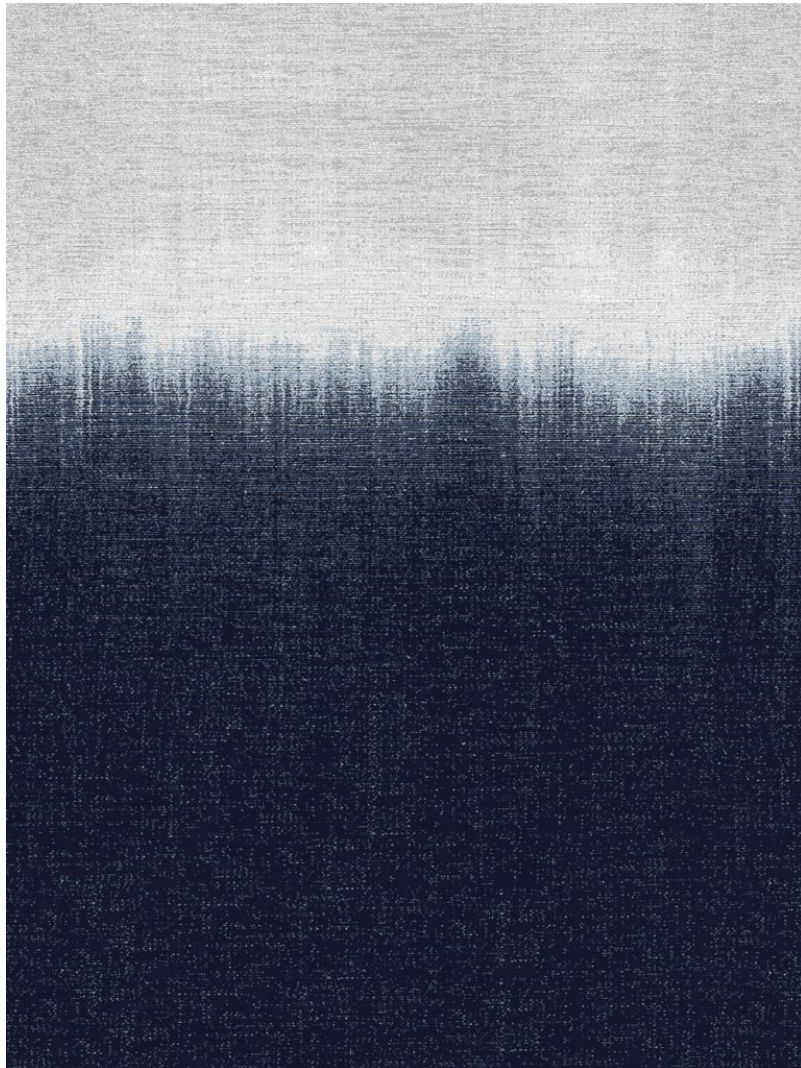


# P E R E N N I A L S

---



## Blue Jean

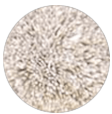
### Take The Plunge Tibetan Knot

TK357-501-0912

#### DETAILS & SPECS

Designer	Studio
Construction	Tibetan Knot
Colorway	Blue Jean
Collection	2017 B Fall

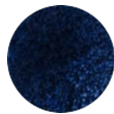
#### Pom Colors



188



129



284

---

#### DESCRIPTION

Hand knotted, 80 knots per square inch.