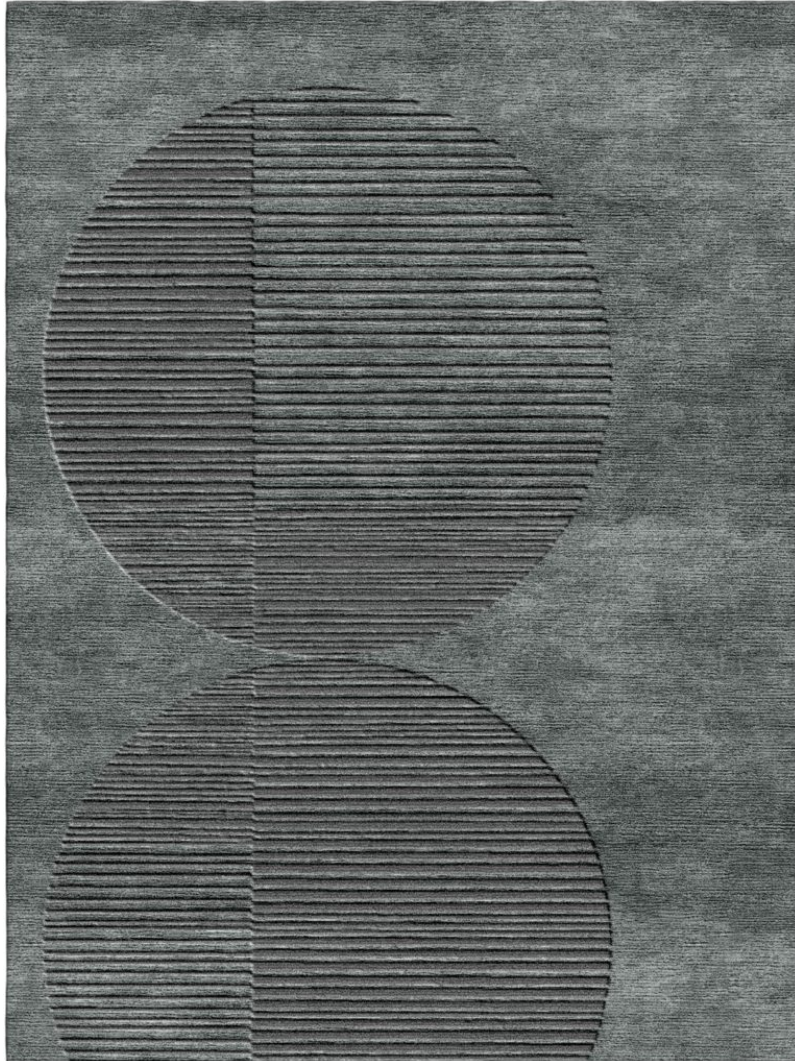


# P E R E N N I A L S

---



**EARL GREY**

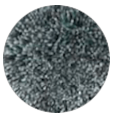
**C Major Tibetan Knot**

TK379-768

## DETAILS & SPECS

Designer	Studio
Construction	Tibetan Knot
Colorway	EARL GREY
Collection	2020 A Spring: In the Mix

### Pom Colors



202



67

---

## DESCRIPTION

Hand knotted, 80 knots per square inch.